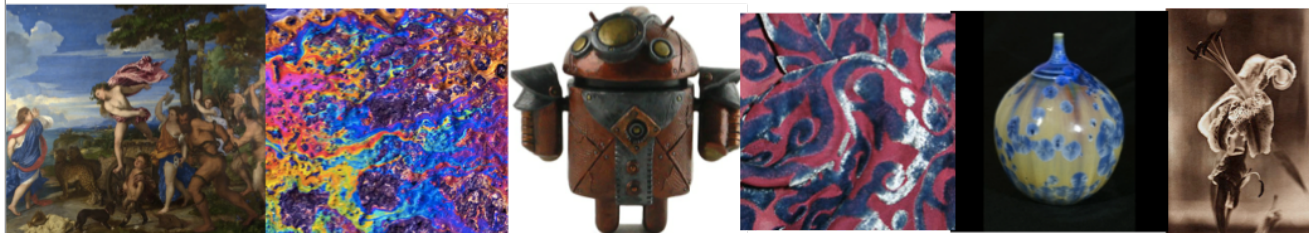


# MATERIALS OF ART



## Contact info

Hilary Eppley  
[heppley@depauw.edu](mailto:heppley@depauw.edu)

765-658-4603

Office: Julian 355

Office Hours:  
M 2 PM - 3 PM  
W 4:00 - 5:00 PM  
R 9:30- 11 AM  
F 3-4 PM

## Course Details

MWF 1:40 - 2:40 pm, Harrison  
Hall 016

Lab T 8 - 9:50 AM Julian  
356/358

website: [materialsofart.org](http://materialsofart.org)

## SCIENCE + ART

This interdisciplinary course will investigate the intersections of art, technology, and science, using case studies from ancient times to today's highly technological society. We will investigate concepts such as how our eyes perceive color and where the color we see comes from, how people have isolated pigments from plants and minerals through time, how manufacturing processes have revolutionized the materials for the production of art, and safety and environmental issues surrounding the use of certain materials for art. We will learn about the role that science and complex instrumentation plays in art restoration and the detection of forgeries. In addition to writing and discussion assignments, students will do some "laboratory" activities such as developing their own black and white photographs using simple equipment, experimenting with metal patinas, making their own paints, and extracting dyes from natural plant sources.

### *Prerequisites*

Class members will bring experiences from various fields of science and art to enrich the class, but no particular prerequisites beyond a basic knowledge of high school level physical sciences (chemistry and physics).

## Course Expectations

The basic assumption of this course is that learning results from a continuing process of discussing, writing, practicing problems and generally grappling with the material. Within the course

## FYS Goals

In our First Year Seminar, I invite and challenge you to:

1. Create an intellectual community with me and your fellow students;
2. Cultivate good academic practices to take with you to the rest of your college career;
3. Develop skill in the art of critical reading by engaging with texts in different fields of study;
4. Learn to write in a variety of different formats to prepare for the rigors of college writing across the curriculum. This will include some formats common in the sciences as well as some more common outside the sciences;
5. Find primary and secondary sources, summarize their main points without plagiarizing, and cite them properly;
6. Gain an appreciation for the intersections of science, history, and the arts, and gain a sense of how to bring your own personal experiences to bear on how you engage with this material;
7. Engage with and contribute to ongoing scholarly conversations about important problems related to the chemistry of art;
8. Master some basic chemistry terminology and apply it to the creation, investigation, and preservation of works of arts;
9. Follow directions and use your own creative muse (when appropriate) to do investigations related to art in the laboratory.

there are both opportunities and responsibilities. In this course you have the opportunity to learn. Your responsibilities are to maximize your learning from the course (i.e. improve your intellectual understanding), maximize and assist in the learning of your classmates, and apply what you learn to your work. To take advantage of the opportunity and to meet your responsibilities you must:

- Attend all classes and lab activities.
- Read all assigned materials by the assigned time.
- Actively participate in class discussions and activities.
- Participate fully in group-work
- Submit all assignments on time and at an acceptable level of quality.

A large portion of the grade will be based on actively participating and learning from that participation. We will discuss this aspect of the course on Friday, Aug 26.

## Grading Policies

The grading for the course is broken into the following areas, additional information will be provided about each category and specific assignment as the course progresses:

4 Major Papers: 5%, 5%, 10%, 10%

Paper 1: Sept 12

Paper 2: Sept 30

Paper 3: Oct 26

Paper 4: Nov 18

(Note that dates represent the first draft deadline)

In class writing, presentations, and lab and class participation (see separate handout) 50%

Quizzes 10% (5 total, each worth 2%)

Final art exhibition project 10% (due at the end of the semester)

The assignment of letter grades at the end of the course will use

the percentage of the total points you receive in the course applied to the following scale:

A	93-100	C	73-76
A-	90-92	C-	70-72
B+	87-89	D+	67-69
B	83-86	D	64-66
B-	80-82	D-	60-63
C+	77-79	F	59 and below

A weekly outline for the class is provided below. The specific day by day activities of the course are available on the course website: <http://materialsofart.org/wp-content/uploads/2016/08/Course-Outline-FYS-2015.pdf>. It is your responsibility to check every week for homework activities and special meeting places (there will be a number throughout the semester).

## Laboratory

---

We will be doing a variety of laboratory exercises throughout the semester. These will be fun and there will be a lot of opportunities to express your creativity during these labs as well as learn some scientific concepts. Always wear proper clothing and eye and foot protection in the laboratory. Record what you do in the laboratory on your lab worksheets and always clean up after yourself!

## Reading

---

All readings for the course can be found on the course outline and are to be read and prepared for the day of class under which they are listed. Reading for the course means reading actively, answering discussion questions (if provided), taking notes, singling out specific points for discussion in class, and doing any specified preparatory activities. You may want to use the same notebook for reading notes as you do for class notes.

## Writing

---

We will do a variety of in and out of class writing in this class including a brief writing assignment most days to respond to the readings. We will focus on the process of revision in this class, and we will use strategies such as writing conferences with me and peer editing to help you improve your writing. I encourage you to make use of the writing center, located on the first floor of Asbury Hall (115). Students of all writing abilities benefit from meeting with writing center tutors. Appointments fill up quickly, so you should schedule your meeting in advance of paper due dates.

## Course Readings

*They Say, I Say*, Graff & Birkenstein

*The Toaster Project*, Thwaites

*The Art of Forgery*, Charney

We will use the Chemistry: Atoms First OpenStax online text for chemistry background material, you can find, view, and or download it at:  
<https://openstax.org/subjects/science>

Additional readings from portions of books and the primary literature will be available as needed through [eReserves](#) or hard copy handouts:

*Vision and Art: The Biology of Seeing*, Livingstone

*Colliding Worlds*, Miller

*Napoleon's Buttons*, Le Couteur & Burreson

*Bright Earth*, Ball

*Mauve*, Garfield

## Use of Laptops & Other Electronic Devices

Please bring to your laptops to every class meeting charged and ready to use. We will be using them for a number of brainstorming and writing and web-based activities; however, there are also times that I will ask you to shut them so that we can do activities without having people distracted by them.

## Late Days

All assignments (reading, homework, writing and exams) are to be turned in during the class period that they are due. Additional late day policies are explained in the separate document on class participation.

## Academic Honesty

You are expected to uphold academic integrity as stated in the Student Handbook under the Academic Integrity Policy. You must refrain from all forms of dishonest academic behavior (e.g., cheating, unauthorized collaboration on projects, plagiarism, etc.). We will have a presentation and several class discussions on proper citation techniques and academic honesty so that the questions you might have as first year students can be answered. Academic dishonesty will result in automatic failure for that assignment, and may be cause for failing the entire course as well as further disciplinary action. If you are not sure what constitutes dishonest academic activities, please make sure to discuss any questions you may have with me. The penalties for academic dishonesty are outlined in the Student Handbook:

<http://www.depauw.edu/academics/academic-resources/academic-integrity/>

## Statement of Inclusivity

I strive to make this class an inclusive learning community, respecting those of differing backgrounds and beliefs. As a community, we aim to be respectful to all citizens in this class, regardless of race, ethnicity, religion, gender or sexual orientation.

This course affirms people of all gender expressions and gender identities. If you prefer to be called a different name than what is on

the class roster, please let me know. Feel free to correct me on your preferred gender pronoun. If you have any questions or concerns, please do not hesitate to contact me.

I am committed to making course content accessible to all students. If English is not your first language and this causes you concern about the course, please speak with me.

## Accommodations

---

It is the policy and practice of DePauw University to provide reasonable accommodations for students with properly documented disabilities. Written notification from Student Disability Services is required. If you are eligible to receive an accommodation and would like to request it for this course, please contact Student Disability Services. Allow one week advance notice to ensure enough time for reasonable accommodations to be made. Otherwise, it is not guaranteed that the accommodation can be provided on a timely basis. Accommodations are not retroactive. Students who have questions about Student Disability Services or who have, or think they may have, a disability (psychiatric, attentional, learning, vision, hearing, physical, medical, etc.) are invited to contact Student Disability Services for a confidential discussion in Union Building Suite 200 or by phone at 658-6267. You are welcome to talk to me privately if you have a need to discuss course requirements and your needs for accommodation.

DePauw accommodates students who are adherents of a religious tradition and wish to fulfill obligations of that religious tradition on holy days. Students are expected to notify their instructors of their intent to fulfill the obligations of their religious tradition well in advance of these days. For the sake of this policy, “holy days” are defined as periods of time in which either: activities required by normal class participation are prohibited by a religious tradition, or a special worship obligation is required by a religious tradition. For this class I ask that you notify by e-mail at least 14 days in advance of the date in question.